

CountryWhois[®]

Help Documentation

Copyright © 2006-2007 TamoSoft

Introduction

About CountryWhois

CountryWhois is a utility for identifying the geographic location of an IP address. CountryWhois can be used to analyze server logs, check e-mail address headers, identify online credit card fraud, or in any other instance where you need to quickly and accurately determine the country of origin by IP address.

What makes CountryWhois different from similar tools is its very high accuracy (over 98%), unprecedented speed of processing (a 100 MB log file is processed within one second), regular updates that keep the ever-changing IP address database up-to-date, an array of supported import and export formats, command-line mode, and a convenient interface.

CountryWhois was built on the renowned [SmartWhois](#)® technology developed by TamoSoft since 1997. While CountryWhois is similar to SmartWhois in some respects, it is focused exclusively on IP-to-country identification and doesn't need to contact external Whois servers.

CountryWhois is also available to software developers as a stand-alone [database and SDK](#).

What's New

Version 2.0

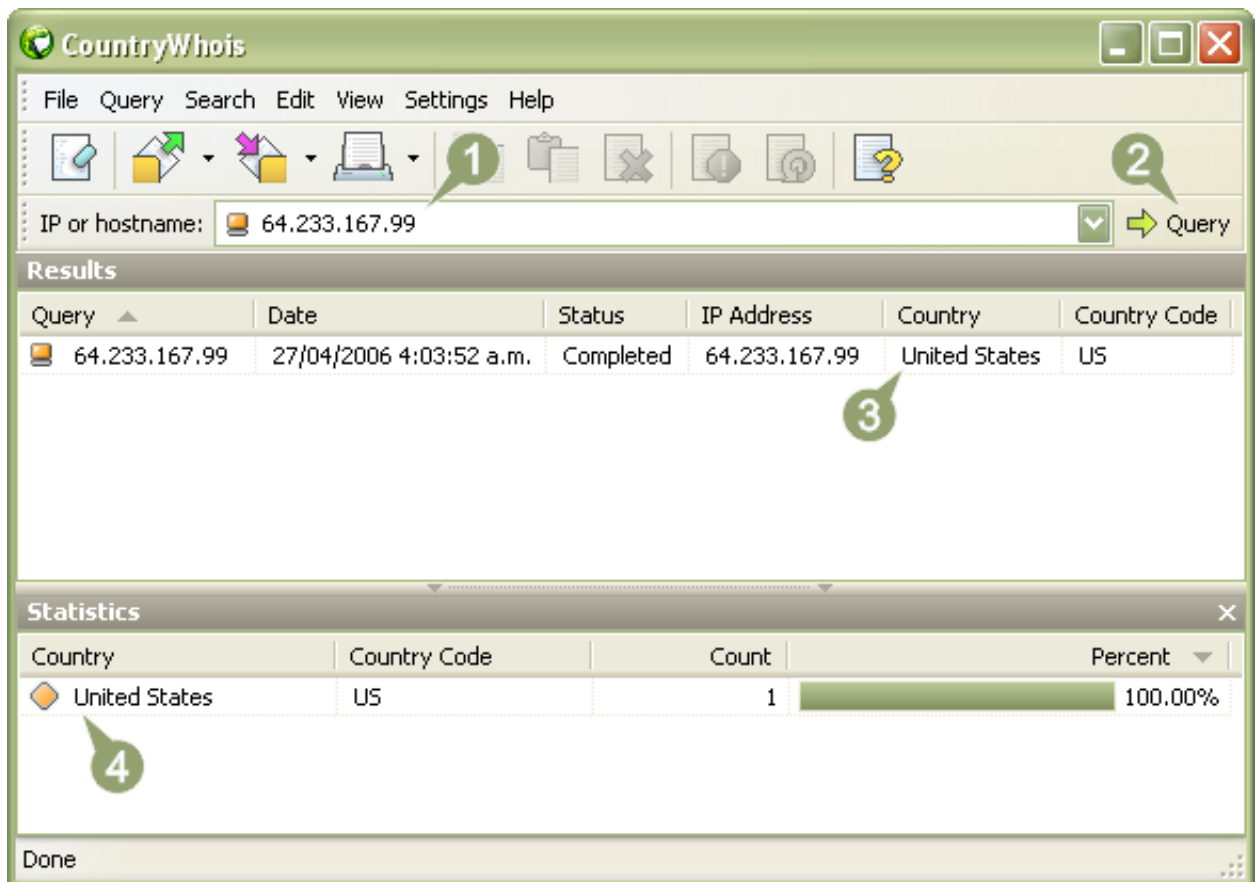
- Statistics can be broken down by continent
- A new batch file processing format (List of IP addresses) and the respective command line parameter
- Multiple batch files can be selected and processed
- A new tool that displays all IP ranges for the given country
- The option to launch multiple application instances
- Faster hostname resolving by using multiple threads
- Can perform queries for the text on the clipboard and in other application windows
- Hot keys that allow you to quickly invoke a number of CountryWhois windows or perform queries for the text on the clipboard and in other application windows
- Console version of the program
- IP allocation map updated
- CountryWhois is now a multi-language application
- Many other improvements

Version 1.1

- Windows Vista support
- IP Allocation map updated
- A few bug fixes

Using CountryWhois

Quick Start



To check an IP address or hostname, simply enter it into the **IP or hostname** field (1) and click the **Query** button (2). The query result will be immediately shown on the **Results** list (3). If you enter one or multiple IP addresses, country-based statistics can be viewed in the **Statistics** panel (4).

See the [Main Window](#) chapter next.

Main Window

The screenshot shows the CountryWhois application window. It features a menu bar (1) with options: File, Query, Search, Edit, View, Settings, Help. Below the menu is a toolbar (2) with icons for file operations and help. An address field (3) contains the IP address 64.233.167.99 and a Query button. The main area is divided into two panels: Results (4) and Statistics (5). The Results panel displays a table of query results, and the Statistics panel displays a table of country distribution statistics. A status bar (6) at the bottom shows the word 'Done'.

No	Query	Date	Status	IP Address	Country	Country Code
1297	64.231.199.249	27/04/2006 1:53:32 a.m.	Completed	64.231.199.249	Canada	CA
1298	64.233.166.136	27/04/2006 1:53:32 a.m.	Completed	64.233.166.136	United States	US
1299	64.233.167.99	27/04/2006 2:04:03 a.m.	Completed	64.233.167.99	United States	US
1300	64.233.172.24	27/04/2006 1:53:32 a.m.	Completed	64.233.172.24	United States	US
1301	64.233.173.85	27/04/2006 1:53:32 a.m.	Completed	64.233.173.85	United States	US
1302	64.233.178.136	27/04/2006 1:53:32 a.m.	Completed	64.233.178.136	United States	US

No	Country	Country Code	Count	Percent
1	United States	US	5680	52.47%
2	Germany	DE	627	5.79%
3	United Kingdom	GB	582	5.38%
4	Canada	CA	387	3.58%

The main program window contains the main menu (1), the toolbar (2), the buttons of which allow you to access the most frequently used commands of the main menu, an address field (3) for entering queries, a results panel (4) to display the results of queries, batch file processing, and results loaded from CountryWhois archives, a statistics panel (5) that displays country distribution statistics, and a status bar (6), which displays various messages.

See also: [Main Menu](#), [Results Panel](#), [Statistics Panel](#)

Main Menu

File

- Clear**
Clears all current results. The toolbar **Clear** button duplicates this command.
- Open**
Allows you to open a CountryWhois archive or file for batch processing. The **Open** toolbar button duplicates this command.

See also: [Working With Files](#), [Batch Processing](#)
- Save**
Saves current results (either all records or selected ones) or statistics to a CountryWhois archive (results only), TXT, XML, XLS, or HTML file. The **Save** toolbar button duplicates this command.

See also: [Working With Files](#)
- Print**
Opens the print preview window. The **Print** toolbar button duplicates this command.

See also: [Printing](#)
- Exit**
Closes the program. Please note: if the **Show Tray Icon** option is enabled in the **Options**, only the main window will close. Use the **Exit** menu item in the tray icon menu to close the program.

See also: [Settings](#)

Query

- Start**
Processes a query entered in the **IP or hostname** field. The **Query** button (located to the right of this field) duplicates this command.

See also: [Query Types](#)
- Stop**
Stops processing a query or batch file. The **Stop** toolbar button duplicates this command.

See also: [Working With Files](#)
- Clipboard**
Contains commands for queries for the text on the clipboard.

See also: [Query Types](#)
- Last Active Window**
Contains commands for queries for the text in windows.

See also: [Query Types](#)

Refresh

- Refresh**
Re-queries selected results (if the focus is on the statistics panel, re-queries all the results for the countries / continents that match the ones selected in the statistics panel). The **Refresh** toolbar button and corresponding menu items on the Results and Statistics panels duplicate this command.

See also: [Results Panel](#), [Statistics Panel](#)

Search

- Find**
Opens the **Find Text** dialog for entering text search parameters (Results searching).

See also: [Searching](#)
- Find Next**
Searches for the next occurrence of the string in the results list. The string is entered in the **Find Text** dialog.

See also: [Searching](#)
- Go to Line**
Opens the **Go to Line** dialog to specify a line number you need to go to.

See also: [Searching](#)

Edit

Copy	<p>Depending on which interface element is selected, copies selected text from the address field, selected results, or statistics lines to the clipboard. This command is duplicated by the Copy button on the toolbar and corresponding items on the context menus of the results panel and statistics panel.</p> <p>See also: Results Panel, Statistics Panel</p>
Paste	<p>Inserts text from the clipboard to the address field (please enable the Automatically de-obfuscate pasted URLs option for auto-converting Web links and IP addresses presented as numbers). The Paste toolbar button duplicates this command.</p> <p>See also: Settings</p>
Delete	<p>Depending on which interface element is selected, deletes the text entered in the address field, selected results, or all results for which the countries match the ones selected in the statistics panel. This command is duplicated by the Delete button on the toolbar and corresponding menu items on the statistics and results panels menus.</p> <p>See also: Results panel, Statistics panel</p>
Select All	<p>Depending on which interface element is selected, this command selects all text in the address field, all results or all lines in the statistics panel.</p> <p>See also: Results Panel, Statistics Panel</p>
View	
Toolbar	Hides or shows the toolbar.
Panel Headers	<p>Hides or shows the headers of the statistics and results panels.</p> <p>See also: Results Panel, Statistics Panel</p>
Statistics Panel	<p>Hides or shows the statistics panel. You can also use the Hide button located on the panel's header to hide the statistics panel. To automatically hide the statistics panel when it loses a focus, enable the Auto hide statistics panel option.</p> <p>See also: Statistics Panel, Settings</p>
Status Bar	Hides or shows the Status Bar.
IP Ranges	<p>Opens the IP Ranges window that contains currently allocated IP ranges for respective countries.</p> <p>See also: IP Ranges, Country Codes</p>
Country Codes	<p>Shows the Country Codes window containing information about country codes (ISO 3166-1 standardized).</p> <p>See also: Country Codes</p>
Settings	
Font	Contains commands for changing the program font. Use the Change command to change a font. Use the Restore Default command to restore the default font.
Language	Allows you to change the interface language. Be sure to restart the program once you've changed the language. The installation package may not include all available language files for the interface. Clicking on the Other Languages menu item opens the additional languages download page on our Web site where you can download your language file if it is available for the current version.
Options	<p>Opens the program settings dialog.</p> <p>See also: Settings</p>
Help	
Contents	Opens the program help file. Please note: only the English help file is included in the installation package. Help files in other languages may be downloaded from the Download Manuals & Help Files page of the TamoSoft Web site. The Help button on the toolbar duplicates this command.

Search for Help On

Opens the help file on the search page.

Check for Updates

Opens the Update Wizard window.

See also: [Automatic Updates](#)

About

Shows the **About** window. This window displays version and build numbers, registered user name, and the duration of the free upgrade period. This information may be requested when contacting TamoSoft customer support.

Results Panel

The Results panel displays the results of the queries entered in the query field, or results generated after processing batch files, or results loaded from CountryWhois archives. The results list contains the following columns:

No	The line number. This column is useful for navigating large lists. This column is hidden by default. Please use the Columns submenu of the list header context menu for displaying this and other columns.
Query	<p>This column contains either text entered in the query address field, or IP address or hostname found when processing a batch file. Multiple queries (the ones entered in the address field and separated by semicolons) will be displayed as several results with the same date (the Date column).</p> <p>See also: Query Types</p>
Date	<p>The query date. Please note that when the Allow duplicate queries in results option is enabled, all query results that have the same query string (the Query column) will be added to the list, but will have a different date. Otherwise, new results will not be added to the list, only the date of the existing results will be updated (equivalent to using the Refresh command). Results of multiple and batch queries have the same date. This column is hidden by default.</p> <p>See also: Settings</p>
Status	<p>The query status. During the processing of a query, the status of its result may change. IP address query results have only one status – Completed, as these queries are processed offline and require no further action. Hostname query results could additionally have the following statuses: Waiting in queue – waiting in queue to resolve the IP address (when processing multiple and batch hostname queries); Resolving – IP address resolution is in process; Waiting – status of all results for which resolution has not been completed (e.g. a query was terminated because the user clicked Stop and closed the program). When the user enters the wrong query string (incorrect IP address or hostname) and when IP resolution errors occur, an error message is displayed. Depending on the result status, the icon in the Query column is also changed.</p>
IP Address	<p>If the query contained an IP address, the column contains the same data as the Query column. If the query contained a hostname, the column contains the result of resolving the hostname to an IP address. This column is hidden by default.</p>
Country	<p>The country name for completed query results. You can optionally enable/disable the display of flags next to the country name in the Options dialog.</p> <p>See also: Settings</p>
Country Code	<p>The ISO 3166-1 country code for completed query results.</p> <p>See also: Country Codes</p>
Continent	<p>The continent name of the respective country.</p>

Dragging a column header to the desired position can change the column order. To sort the list, click on the column header. Sorting direction is changed if you repeatedly click on a column header. If the **Disable results auto sorting** option is enabled, sort settings may be reset when the result list is being changed during querying, batch processing, or archive loading.

The context menu of the results list contains the following commands:

Selection	This menu contains commands to manage selections and allows you to select all results, invert or deselect them.
Copy	This menu contains commands used to copy text of the results list. It's possible to copy all or selected results and individual cells and columns as well.
Find in Statistics	Selects the corresponding country on the Statistics panel. Double-clicking on the results list performs the same action.
Refresh	Re-queries the selected results.
Delete	Deletes the selected results.
SmartWhois Query	<p>Opens the SmartWhois Query dialog that allows you to perform SmartWhois queries.</p> <p>See also: SmartWhois Queries</p>
Search for	<p>Allows you to search for information on the selected country in various search engines specified in the Search Engines dialog. You can hide this command by disabling the Search for Country from the context menu option (located in the Results section of the Options dialog).</p>

See also: [Settings](#), [Search Engines](#)

The context menu of the list header also contains the following commands:

Columns

Use this menu to hide or show columns.

Sort By

This menu contains commands to manage list sorting. To sort the list by a specific column, click on the item with the column name. To change the sorting direction, click this item again. The **None** item disables list sorting and all new and changed results will be moved to the end of the list regardless of their data. This behavior corresponds to the enabled **Disable results auto sorting** option.

See also: [Settings](#)

By default, closing the program doesn't clear the results, e.g. they will still be there when you restart the program. To clear the list on exit, enable the **Clear results on exit** option.

See also: [Statistics panel](#), [Settings](#)

Statistics Panel

The statistics panel displays the statistics summary for the results obtained by the program. The list contents dynamically change when the results list changes. To hide the statistics panel, use the corresponding command in the **View** submenu or the **Hide** button located on the panel header. To automatically hide the statistics panel when it loses focus, enable the **Auto hide statistics panel** option (located on the **Statistics** page of the **Options** dialog).

Each line of the list displays per-country data by way of the following columns:

No	The line number. This column is useful for navigating large lists. This column is hidden by default. Please use the Columns submenu of the list header context menu for displaying this and other columns.
Continent/Country	The country or continent name. If the Group By Continent option of the context menu is enabled, the continent name and the respective countries will be displayed in this column. Otherwise (option is disabled), only the country will be displayed. If the Show flags in the Country column option (located on the Statistics page of the Options dialog) is enabled, the country flag will be displayed next to the country name. See also: Settings
Country Code	The ISO 3166-1 country code. See also: Country Codes
Continent	The continent name of the respective country. This column is hidden by default.
Count	The number of results in the results list that belong to a particular country or continent.
Percent	The percentage of results in the results list that belong to a particular country or continent. The column also includes percentage bars that you can hide by disabling the Show percentage bar option (located on the Statistics page). See also: Settings

Dragging a column header to the desired position can change the column order. To sort the list, click on the column header. Sorting direction is changed if you repeatedly click on a column header. If the **Disable statistics auto sorting** option is enabled (located on the **Statistics** page of the **Options** dialog), sort settings may be reset when the result list is being changed during querying, batch processing, or archive loading.

The context menu of the statistics list contains the following commands:

Group By Continent	When this option is enabled, the statistics will be displayed as a tree view. The parent nodes represent continents, and the child nodes represent countries that belong to the respective continents.
Expand All	Expands parent nodes of the tree view. This option is available only when the Group By Continent option is enabled.
Collapse All	Collapses parent nodes of the tree view. This option is available only when the Group By Continent option is enabled.
Selection	This menu contains commands for selection management that allow you to select all results and then invert and remove the selection.
Copy	Contains commands for copying the statistics list contents. It's possible to copy all or selected lines and also single cells and columns.
Find in Results	Selects all results and determines which countries match the ones selected in the statistics list. The results list is scrolled until the first selected element is found. This command is similar to double-clicking on the statistics line. If this command is applied to a continent node, then all the results in which the country belongs to the respective continent will be highlighted.
Refresh	Makes repeated queries of the results for which the countries match the ones selected in the statistics list. If this command is applied to a continent node, then all the results in which the country belongs to the respective continent will be refreshed.
Delete	Deletes all results that match the countries selected in the statistics list. If this command is applied to a continent node, then all the results in which the country belongs to the respective continent will be

deleted.

SmartWhois Query Opens the **SmartWhois Query** dialog to allow SmartWhois queries for all results, determined by which countries / continent match the ones selected in the statistics list.

See also: [SmartWhois Queries](#)

Search for Allows you to search for information about the selected country / continent in the search engines specified in the **Search Engines** dialog. To disable this command, disable the **Search for Country** option (located in the context menu of the **Statistics** page).

See also: [Settings](#), [Search Engines](#)

Additionally, the context menu of the list header contains the following commands:

Columns Use this menu to hide or show columns.

Sort By This menu contains commands to manage list sorting. To sort the list by a specific column, click on the column name. To change the sorting direction, click this item again. The **None** item disables list sorting and all new and changed results will be moved to the end of the list regardless of their data. This behavior corresponds to the enabled **Disable statistics auto sorting** option.

See also: [Settings](#)

See also: [Results Panel](#), [Settings](#)

Query Types

In addition to entering a single IP address or hostname in the query input field, you can also enter multiple IP addresses or hostnames separated by semicolons, e.g.:

207.105.83.90;207.46.197.113;google.com

You may also enter archive or batch file names for processing in the Auto Detect mode (hold the Ctrl key and click on the Query button to open the dialog for selecting files).

Clipboard Queries

If you would like to query information located on the clipboard, click **Query => Clipboard** and select the preferred query type. This option is available in both main window and tray icon menus. When selecting the **As IP Address or Hostname** query type, CountryWhois will perform a query for the first word found in the clipboard text. If text contains a list of IP addresses, hostnames, or domains, select the corresponding text format (the formats are similar to the ones specified when batch processing files).

In case the program window is inactive, you will still be able to perform queries by using hotkeys that can be assigned to any of the above-mentioned commands. Please see the [Settings](#) chapter for more information on using hotkeys.

Please note that hotkeys are disabled by default.

Window Queries

To query information located in the desired window, you need to activate the window and click **Query => Last Active Window** and select the preferred query type. This option is available in both main window and tray icon menus. When selecting **As IP Address or Hostname** query type, CountryWhois will perform a query for the first word found in the active window. If text contains a list of IP addresses, hostnames, or domains, select the corresponding text format (the formats are similar to the ones specified when batch processing files).

If you need to process just a part of the text in the window, highlight it before performing the query. In case the program window is inactive, you will still be able to perform queries by using hotkeys that can be assigned to any of the above-mentioned commands. Please see the [Settings](#) chapter for more information on using hotkeys.

Please note that hotkeys are disabled by default.

Note: this option is available for windows that support standard system text extraction methods only.

See also: [Batch Processing](#), [Settings](#)

Working With Files

Results of all or selected queries or statistics data can be saved as a CountryWhois archive (.cwh files, results only) and exported as text (separated by various separators), HTML, XML, or XLS files.

To save all results, click **File => Save => All Results** or the **Save** toolbar button. For selective saving, select the required results in the list and click **File => Save => Selected Results** or **Selected Results** in the **Save** button menu. Enter the name of the file being saved, choose the required file type from the **Save As Type** drop-down list and click **Save**. To save the statistics list, use **File => Save => Statistics** or the **Statistics** item in the **Save** button menu.

Before exporting the data you can hide the columns, the contents of which you do not wish to export. You can also change the column sequence by dragging their headers to the desired positions and sort the list in the required order by clicking the headers of the respective columns. This doesn't apply to the export of CountryWhois archives.

Note: The maximum number of lines that can be exported into XLS format is 65536.

To load previously saved archives, use **File => Open => CountryWhois Archive** or the **Open** toolbar button. You can also drag-and-drop a .cwh file into the program window. Note that if the file being dropped is not a CountryWhois archive, it will be processed as a batch file in **Auto Detect** mode. If the **Clear current results on archive load** option is enabled (located on the **Results** page in the **Options** dialog), opening a file will clear current results. Otherwise, new results will be added to the list.

If the current results and the results being loaded contain duplicate IP addresses, the program behavior will depend on the **Allow duplicate queries in results** option: If this option is enabled, all the results except the ones with dates that match the dates of the current results will be loaded.

See also: [Settings](#), [Command Line Parameters](#)

Batch Processing

To load a file for batch processing (e.g. a server log), use **File => Open => Batch File**. Next, enter the file name and select its format. Click **OK** to start processing.

Important: When entering multiple file names, they must be enclosed in quotation marks (" ") and separated by commas.

If a processed file consists of a text containing IP addresses (for example, e-mail message headers), the **Text containing IP addresses** format needs to be selected. When processing such files, all IP addresses will be processed regardless of their arrangement in the text. To process the IP address (for instance a Web or FTP server log), hostname, or domain lists, use the **List of IP addresses** or **List of hostnames** format. The first word of every line containing a correct IP address, host, or domain name will be processed. When selecting the **Auto Detect** option, the following file processing rules are applied: if a line contains one or several IP addresses, all IP addresses will be processed. If a line does not contain IP addresses, the first word of a line will be processed if it contains a correct host- or domain name.

If the **Clear current results on batch load** option is enabled (located on the **Results** page of the **Options** dialog), all current results will be cleared after loading a file. If the **Allow duplicate queries in results** option is disabled, all current results which request string (the **Query** column) matches the batch file processing results, will be replaced by the batch file processing results; i.e. it's similar to executing the **Refresh** command.

To load a file for batch processing (e.g. a server log), use **File => Open => Batch**. Next, enter the file name and select its format in the **Open Batch File** dialog. Click **OK** to start processing.

If the **Clear current results on batch load** option is enabled (located on the **Results** page of the **Options** dialog), all current results will be cleared after loading a file.

See also: [Settings](#), [Command Line Parameters](#)

Printing

Before printing statistics or results, you can customize the data to be printed by showing or hiding columns, or changing their order, or sorting the list. Select part of the results if you need a selective printing.

Open the **Print** dialog by using **File => Print => All Results** or **File => Print => Selected Results** (for printing selected results) or **File => Print => Statistics** if you would like to print the statistics. Set the necessary page parameters by filling in the respective fields (when changing printing options, the page view on the right will dynamically change). Select the pages you would like to print and click **Print**.

See also: [Results Panel](#), [Statistics Panel](#)

Searching

Use **Search => Find** for searching text in the results list. Enter the desired text in the **Text To Find** field and click **Find**. Check the **Match case** box if you need to find a case-sensitive text.

If you would like to have all the results that contain the text being searched for highlighted, check the **Select all matching results** box.

The results list will be scrolled down to the first line containing the desired text (this line will be highlighted). Use **Search => Find Next** to find the next occurrence(s).

If you need to go to a specific line, you can use the **Go to Line** dialog by clicking **Search => Go to Line**. Note that the results list has a column with line numbers that is disabled by default. Use the **Columns** command of the header context menu to enable it if needed.

See also: [Results Panel](#)

Country Codes

The **Country Codes** window contains information on country codes (ISO 3166-1 standardized). The latest official country code list is also available at the following address:

http://www.iso.org/iso/en/prods-services/iso3166ma/02iso-3166-code-lists/iso_3166-1_decoding_table.html

Use **View => Country Codes** to open this window.

IP Ranges

The IP Ranges window contains information about IP Ranges allocated to the countries that are included in the official list of the ISO 3166-1 standard.

http://www.iso.org/iso/iso-3166-1_decoding_table

Use **View** => **IP Ranges** to open this window.

SmartWhois Queries

[SmartWhois](#) is a handy utility for obtaining information about any IP address, hostname, or domain in the world. Unlike standard whois utilities, it automatically delivers information associated with an IP address or domain no matter where it is registered geographically. SmartWhois obtains more detailed information about IP addresses than CountryWhois. In addition to country, it will also display IP address or domain owner.

Select the results you would like to pass to SmartWhois for processing and use **SmartWhois Query** (located in the context menu of the results list). When a new window opens, select a line and click either **As IP-address/Hostname** or **As Domain** for initiating the corresponding SmartWhois query.

If you invoke this dialog from the context menu of the **Statistics** panel, its list will contain all the results for the selected country / continent.

See also: [Results Panel](#), [Statistics Panel](#), [Other Products](#)

Search Engines

You can search for information on any country in any number of search engines using the **Search for** command on the **Results** or **Statistics** panel. The search engines list is customizable; use **Search for => Configure** to edit this list. Note that a template should contain the <QUERY> string that will be substituted by the actual country / continent name when processing a request.

See also: [Results Panel](#), [Statistics Panel](#)

Settings

Query

This page contains a set of options affecting the query input in the address string and history of the previously entered queries:

Automatically de-obfuscate pasted URLs

Enable this option for the automatic conversion of the text pasted from the clipboard to the address input field: When pasting a URL, the protocol identifier and the path to an object will be deleted. For instance, "http://www.tamos.com/index.html" will be converted to "www.tamos.com". When pasting an IP address as a number, the IP address will be converted to a string of octets separated by dots: for instance, "10" will be converted to "0.0.0.10".

Sort query history

When this option is enabled, the history of queries entered in the address string will be sorted alphabetically. Otherwise, the first line of the list will contain the last query.

Clear query history on exit

If you enable this option, the drop-down list containing the query history will be cleared when the program is closed.

Results

These options control how the results are processed and displayed:

Allow duplicate queries in results

If this option is enabled, all results where the date is not identical are added to the list. Otherwise, the result with the newest date will remain.

Disable results auto sorting

Enabling this option resets current sort settings when the list is changed. New and modified results are then appended to the end of the list, which improves performance when working with large lists.

Search for Country from the context menu

If this option is enabled, the **Search for** command is added to the context menu of the Results list.

See also: [Search Engines](#)

Show flags in the Country column

Shows flags in the **Country** column.

Clear current results on archive load

If this option is enabled, all current results will be cleared when loading a CountryWhois archive. If you disable this option, use the **Allow duplicate queries in results** option to control the program behavior on adding results with the equal query strings.

Clear current results on batch load

If this option is enabled, all current results will be cleared when loading a batch file. If you disable this option, use the **Allow duplicate queries in results** option to control the program behavior on adding results with equal query strings.

Clear results on exit

By default, the Results list is saved when the program is closed. Note that results are only saved for the first instance of the application that was started **without** command line batch processing parameters.

Enable this option to clear the results on exit.

See also: [System](#)

See also: [Results Panel](#), [Working With Files](#)

Statistics

These options control how the statistics are processed and displayed:

Auto hide statistics panel

If you enable this option, the Statistics panel will automatically hide on losing focus. You need to use the **View => Statistics Panel** command or **Find in Statistics** (located on the context menu of the results list) for the panel to reappear.

Disable statistics auto sorting

Enabling this option resets current sort settings when the list is changed. New and modified lines are then appended to the end of the list, which improves performance when working with large lists.

Search for Country from the context menu	If this option is enabled, the Search for command is added to the context menu of the statistics panel. See also: Search Engines
Show flags in the Country column	Displays flags in the Country column.
Show percentage bars	Enable this option to show the percentage bars in the Percent column.

See also: [Statistics Panel](#), [Results Panel](#)

Hostnames

In order to determine the country a hostname belongs to, its IP address should be determined first. IP address resolution is a relatively time-consuming process (from a few milliseconds up to several seconds) that requires an Internet connection. The multithreaded resolving and DNS cache accelerates this process.

You can specify the number of simultaneous IP resolution threads (when processing multiple queries and batch files that contain hostnames) in the **Simultaneous IP address resolving threads** field. Note that a large number of simultaneously-started resolving threads may lead to excessive CPU and network utilization. We suggest that you reduce the number of resolving threads if you experience resolving errors.

To use DNS caching, enable the **Enable hostname/IP-address caching** option. The **Maximum number of records** field contains the maximum number of hostname/IP address pairs stored in the cache. The current number of records is shown in the **Current number of records** field.

Click on the **View Cache** button to view the cache contents. To clear the cache, click **Clear Cache**. If you enable the **Clear cache on exit** option, the cache will be cleared when the program is closed.

System

If you would like CountryWhois to start automatically on Windows startup, enable the **Run on Windows Startup** option.

The **Allow multiple application instances** option should be enabled if you need to start multiple instances of CountryWhois. Note that starting multiple instances of the program is allowed for command line batch processing only by default. Disable the **For command line batch processing only** option to override this limitation.

If you enable the **Show tray icon** option, the program icon will be displayed in the system tray. Note that when this and the **Close to tray** options are enabled, closing the main window doesn't close the program. In this case, use the **Exit** command of the icon context menu to close the program. If you would like to open the main window, use the **Show** command or double-click the icon. Check the **Single click on tray icon to open** box to activate the window with a single click.

See also: [Command Line Parameters](#)

Hotkeys

This page contains hotkeys that allow you to open a number of CountryWhois windows and perform clipboard and window queries. To enable a hotkey, check the corresponding box and use your keyboard to select a unique hotkey for the selected action (e.g. hold down Ctrl + Shift + H). Note that the selected hotkey combinations should be unique in order to not create conflicts with hotkeys assigned by other applications.

Miscellaneous

To display flags in the **Country Codes** and **SmartWhois Query** windows, enable the corresponding options.

Updates

Use **Enable automatic application updates** to let the program connect to the TamoSoft Web site periodically and check for updates. Use the **Interval between checks** box to configure how often the checks should be made. To check for updates manually, click the **Check for Updates Now** button.

See also: [Automatic Updates](#)

Command Line Parameters

To load a CountryWhois archive, specify its file name as the first parameter:

```
cwhois.exe c:\archive.cwh
```

When querying IP addresses or hostnames, the "-q" parameter should precede the query string:

```
cwhois.exe -q 207.105.83.90  
cwhois.exe -q 207.46.197.113:google.com
```

To load a batch file for processing, specify at least two parameters. The first one defines the file format:

```
-bi    Text containing IP addresses  
-bl    List of IP addresses  
-bh    List of hostnames  
-ba    Auto detect
```

The second parameter should contain a file name for processing:

```
cwhois.exe -bl c:\webaccess.log
```

It is also possible to specify an output file name and its format. The third parameter would then define the output file format:

```
-ocwh  CountryWhois Archive  
-otab  Text File (TAB delimited)  
-ospc  Text File (Space delimited)  
-ocsv  Text File (Comma delimited)  
-ohtm  HTML File  
-oxml  XML File  
-oxls  XLS File
```

The parameter defining the output file format should go right after the name of the file being processed. The fourth parameter should contain the output file name, e.g.:

```
cwhois.exe -bi c:\webaccess.log -ocwh c:\results.cwh
```

If a file name contains spaces, it should be enclosed in quotes:

```
cwhois.exe -bi "c:\my documents\webaccess.log" -ocwh "c:\my documents\results.cwh"
```

If you use an output file name, you can also use the "-c" parameter. This parameter tells the program that it should close after processing and saving results.

```
cwhois.exe -bi c:\webaccess.log -ocwh c:\results.cwh -c
```

To prevent opening (or activation) of the main window when querying or processing batch files, the additional "-h" parameter may be used. It should always be the last one or precede the "-c" parameter, e.g.:

```
cwhois.exe -q 207.105.83.90 -h  
cwhois.exe -q 207.46.197.113:google.com -h  
cwhois.exe -bi c:\webaccess.log -h  
cwhois.exe -bi c:\webaccess.log -ocwh c:\results.cwh -h  
cwhois.exe -bi c:\webaccess.log -ocwh c:\results.cwh -h -c
```

See also: [Query Types](#), [Working With Files](#), [Batch Processing](#)

Automatic Updates

CountryWhois contains an automatic update module that helps you check for new versions of the program. The module settings are located on the **Application Updates** page of the **Options** dialog.

If the automatic updates check is enabled, the update wizard dialog will open when a new version of CountryWhois is released. The wizard will prompt you to download and install the update.

You can also check for updates manually by clicking **Help => Check for Updates on the Web**.

See also: [Settings](#)

Information

How to Purchase CountryWhois

This program is a 30-day evaluation version. If you would like to continue using it after 30 days, you must purchase it.

As a registered customer you are entitled to:

- Free updates that will be released within 1 year from the date of purchase;
- Information on updates and new products;
- Free technical support.

We accept credit card orders, orders by phone and fax, checks, and wire transfers. Prices, terms, and conditions are subject to change without notice; please check our Web site for the latest product offerings and prices.

<http://www.tamos.com/order/>

Contacting Us

Web

<http://www.tamos.com>

E-mail

sales@tamos.com (Sales-related questions)

support@tamos.com (All other questions)

Mail and Fax

Mailing address:

PO Box 1385
Christchurch 8015
New Zealand

Fax: +64 3 359 0392 (New Zealand)

Fax: +1 917 591 6567 (USA)

Other Products by TamoSoft

CommView

CommView is a program for monitoring Internet and Local Area Network (LAN) activity capable of capturing and analyzing network packets. It gathers information about data passing through your dial-up connection or Ethernet card and decodes the analyzed data. With CommView, you can see a list of network connections and vital IP statistics and examine individual packets. Packets are decoded down to the lowest layer, with full analysis of the most widespread protocols. Full access to raw data is also provided in real time. CommView is a helpful tool for LAN administrators, security professionals, network programmers, or anyone who wants to have a full picture of the traffic going through one's PC or LAN segment.

[More information](#)

CommView for WiFi

CommView for WiFi is a powerful wireless network monitor and analyzer for 802.11 a/b/g networks. Loaded with many user-friendly features, CommView for WiFi combines performance and flexibility with an ease of use unmatched in the industry. CommView for WiFi captures every packet on the air to display important information such as a list of access points and stations, per-node and per-channel statistics, signal strength, a list of packets and network connections, protocol distribution charts, etc. By providing this information, CommView for WiFi can help you view and examine packets, pinpoint network problems, perform site surveys, and troubleshoot software and hardware.

[More information](#)

NetResident

NetResident is an advanced network content monitoring program that captures, stores, analyzes, and reconstructs network events such as e-mail messages, Web pages, downloaded files and instant messages. NetResident uses advanced monitoring technology to capture the required data from the network, saves it to a database, reconstructs it, and displays this content in an easy-to-understand format. While NetResident is similar to network analyzers in many respects, it focuses on high-level protocols that are used to transfer content over the Internet or LAN. With NetResident, you don't need a profound understanding of networking technologies, have to use complex packet capturing and analysis software, or dig through network packets in order to reconstruct the actual data; NetResident does all the work for you and presents only the Web pages, e-mails, instant messages, or downloaded files as requested. NetResident is used by network administrators to enforce IT policy, parents to monitor their children's communication on the Internet, and by forensic experts to gain crucial information.

[More information](#)

CommTraffic

CommTraffic is a network utility for collecting, processing, and displaying traffic and network utilization statistics for network connections, including LAN and dial-up. It shows traffic and network utilization statistics for each computer in the segment. The software provides a very attractive and customizable interface, with an optional tray icon menu that displays general network statistics. You can also generate reports that reflect the network traffic volume and Internet connection expenses (if any). CommTraffic supports virtually any rate plan your ISP might use, such as one based on connection time, traffic volume, time of the day, or other measures. You can set alarms that will inform you when certain criteria (e.g. amount of traffic, expenses) are reached. A configuration wizard will guide you through the setup and automatically detect your network or connection settings.

[More information](#)

SmartWhois

SmartWhois is a handy utility for obtaining information about any IP address, hostname, or domain in the world. Unlike standard whois utilities, it automatically delivers information associated with an IP address or domain no matter where it is registered geographically. In just a few seconds, you get all you want to know about a user: domain, network name, country, state or province, and city. Even if the IP address cannot be resolved to a hostname, SmartWhois won't fail!

[More information](#)

Essential NetTools

Essential NetTools is a set of network tools useful in diagnosing networks and monitoring your computer's network connections. It's a Swiss Army knife for everyone interested in a set of powerful network tools for everyday use. The program includes a NetStat utility that shows your computer's network connections and open ports and maps them to the owning application. It also features a fast NetBIOS scanner, a NetBIOS Auditing Tool for checking LAN security, and a monitor of external connections to your computer's shared resources, as well as a process monitor that displays information about all the programs and services running on your computer. Other useful tools are included, such as Ping, TraceRoute, and NSLookup. Additional features include report generation in HTML, text, and comma delimited formats and a customizable interface. The program is an easy-to-use and powerful

replacement for such Windows utilities as nbtstat, netstat, and NetWatcher. It incorporates many advanced features that standard Windows tools can't offer.

[More information](#)

DigiSecret

DigiSecret is an easy-to-use, secure and powerful application for file encryption and sharing. It utilizes strong and time-proven encryption algorithms for creating encrypted archives, self-extracting EXE files, and sharing files with your associates and friends. DigiSecret also includes powerful and intelligent file compression; you no longer need .zip files when you can have encrypted and compressed DigiSecret files. The program is integrated with the Windows shell, and you can perform operations on files by right-clicking on them. It also fully supports drag-and-drop operations.

[More information](#)