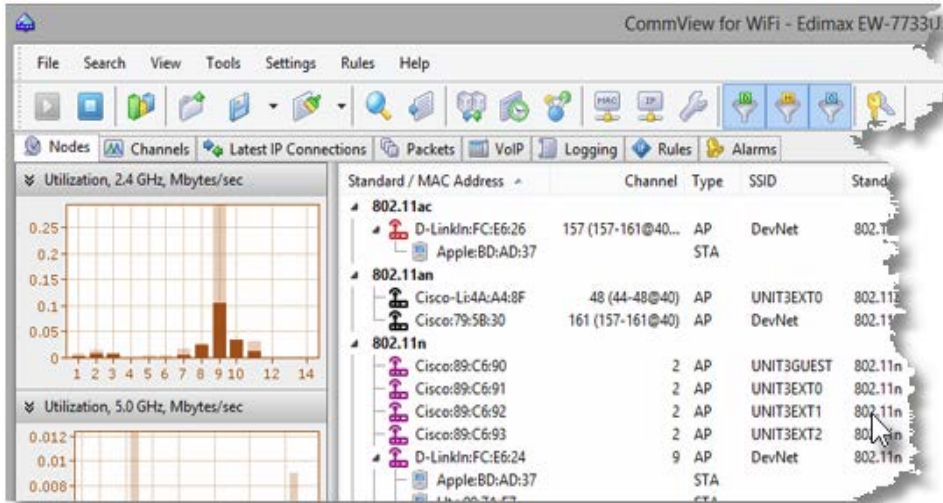


WLAN Monitoring Made Easy

The rapid proliferation of wireless technology requires new tools for professionals who deal with the deployment, maintenance, and security of WLANs, as well as network forensics. Meeting this need, TamoSoft introduces CommView for WiFi, a powerful wireless network monitor and analyzer for 802.11 a/b/g/n/ac/ax networks. Loaded with many user-friendly features, CommView for WiFi combines performance and flexibility with an ease of use unmatched in the industry. This application captures every packet on the air



to display important information such as the list of access points and stations, per-node and per-channel statistics, signal strength, a list of packets and network connections, protocol distribution charts, etc. By providing this information, CommView for WiFi can help you view and examine packets, pinpoint network problems, and troubleshoot software and hardware.

VoIP Analysis

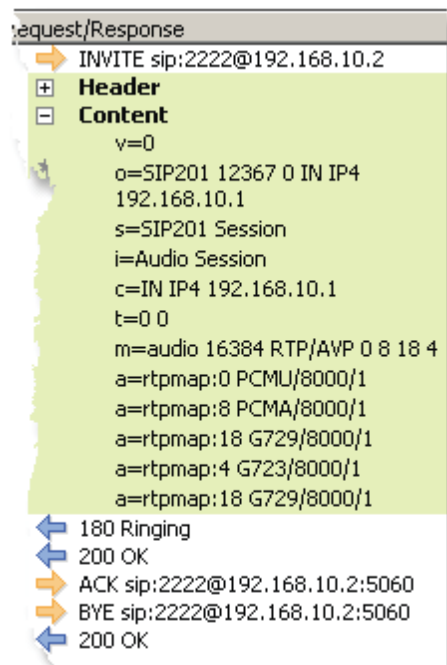
CommView includes a VoIP analysis module that is suited for real-time capturing and analyzing Internet telephony events, such as call flow, signaling sessions, registrations, media streams, errors, etc. By visualizing this data and assessing voice quality, this tool helps you boost productivity in debugging VoIP networks, software, and hardware. CommView's VoIP analyzer supports SIP 2.0 and H.323 signaling protocols and RTP 2.0 media streams and many widespread codecs.

Protocol Decoding

With over 70 supported protocols, CommView for WiFi allows you to see every detail of a captured packet using a convenient tree-like structure to display protocol layers and packet headers. Additionally, the product provides an open interface for plugging in custom decoding modules.

WEP and WPA Security

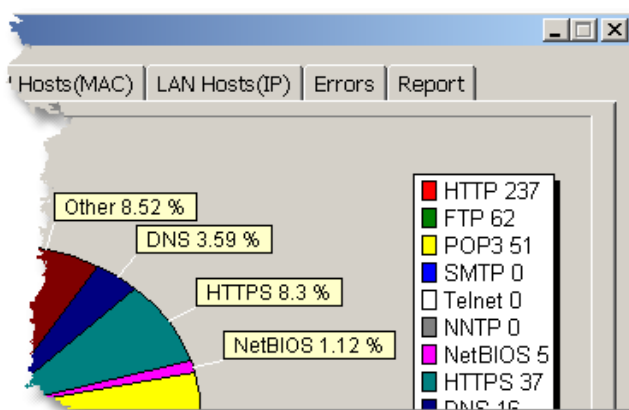
Keeping pace with the latest security standards, CommView for WiFi can decode 802.11 authentication and key exchange packets as well as



perform on-the-fly and post-capture decryption of encrypted data packets. A user-defined 64, 128, 152, or 256-bit WEP key is required to decrypt WEP-encrypted packets; a WPA passphrase is required for decrypting WPA/WPA2-encrypted packets in PSK (Pre-Shared Key) mode.

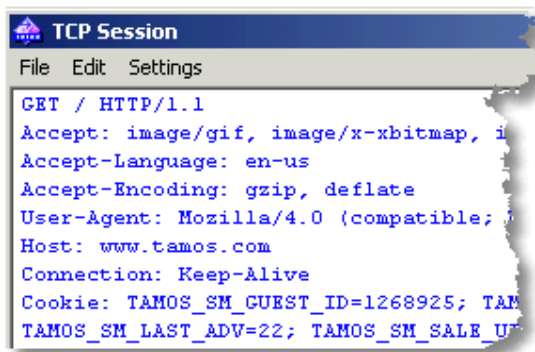
Reports

Customizable reports generated by CommView for WiFi provide the user with detailed, real-time statistical data that covers network utilization, top LAN talkers, protocol distribution, errors and more. Reports are available in HTML and text formats.



Reconstructing Data Streams

One of the most important features of a good packet analyzer is the ability to reconstruct TCP data streams, providing the user with easy-to-read information on both current and past TCP sessions between different network hosts. With just one mouse click, you can watch the contents of any TCP session, be it an HTTP client-server conversation shown as an HTML page, or a POP3 mail download shown as ASCII text. Another mouse click, and you can see the next session between the selected or any other hosts. If your WLAN traffic is encrypted, you can use this functionality if the correct WEP or WPA-PSK key is supplied.



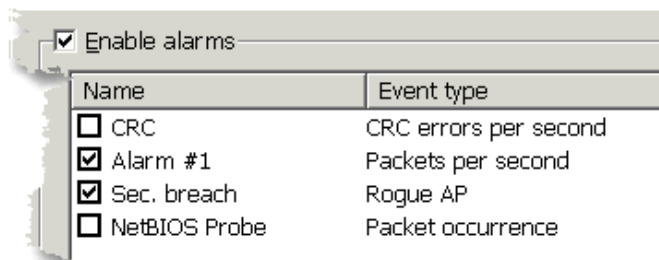
Data Exchange

With CommView for WiFi, sharing capture files is easy. This application can import and export data in many different formats, including Network Instruments Observer®, Network General Sniffer® for DOS/Windows, Microsoft® NetMon, WildPackets EtherPeek™ and AiroPeek™, and Tcpdump (libcap) file formats.

Additionally, it can establish a direct TCP/IP link with any other application and send the data being captured in real time for further processing to any custom decoding or logging module. CommView for WiFi capture file format is open; it is described in detail in the product's help documentation.

Filters and Alarms

CommView for WiFi provides a flexible system of filters ideal for filtering out unimportant network traffic and concentrating on critical packets and events. Filter traffic based on the protocol, MAC or IP address, port, text string; detect rogue access points; or use advanced Boolean rules for creating complex formulas. An array of alarm notification options will warn you of important events by displaying a message, playing a sound, launching an application, sending an e-mail message, etc.



Packet Generation

In addition to passive monitoring, the product is capable of sending arbitrary wireless packets through your network adapter. This function is extremely useful for simulating abnormal traffic, network attacks, or for testing firewalls and intrusion detection systems without having to set up any hardware or software. The packet generation tool features a convenient data editor, protocol decoder, checksum corrector, template repository and allows you to send individual packets or replay previously captured log files at an adjustable transmission rate.

Product Maintenance

All TamoSoft products come with one year of free updates, upgrades, and e-mail support.

System Requirements

CommView for WiFi requires an Intel Core 2 or higher CPU, 2 GB of RAM, and 100 MB of free disk space. A compatible wireless network adapter is also required. CommView for WiFi supports dozens of integrated and USB adapters. For an up-to-date list of supported network adapters, please visit www.tamos.com. CommView for WiFi requires the installation of a custom "monitoring only" NDIS driver for the network adapter. This driver is shipped with the application. CommView for WiFi runs on Microsoft Windows 7, Windows 8, Windows 8.1, Windows 10, Windows Server 2008 R2, Windows Server 2012, Windows Server 2012 R2. Both 32- and 64-bit versions are supported.

Ordering Information

At TamoSoft, we want you to be happy with your purchase. That is why we encourage you to try out our products and technical support free of charge for 30 days before you make a decision regarding your purchase. By making the most of these free evaluations, you can fully test the software and make sure that it does everything you need. When you are ready to buy, we welcome you to www.tamos.com to order directly from us, or through our partners and resellers in many countries.

Copyright © 1998-2019 TamoSoft. All Rights Reserved. No part of this document can be reproduced, duplicated or modified in any form, including electronic means, without the express written permission of TamoSoft. CommView is a registered trademark of TamoSoft. All other product names and trademarks are the property of their respective holders.