

### A New Level of Network Data Visualization

In the realm of traditional network analysis products, monitoring application-level data streams is a challenging task. While some of these products have the functionality necessary to reconstruct web sessions, instant messenger chats, and similar content, this functionality is very limited and can hardly be automated. And that's where NetResident, TamoSoft's network content monitoring system, comes to the rescue. NetResident was designed with a very specific purpose in mind: high-level automatic network content monitoring. In other words, NetResident captures, stores, analyzes, and reconstructs network events, not just individual packets or cryptic TCP session dumps.

NetResident helps organizations protect sensitive information and enforce security policies as well as adhere to government and industry information protection regulations by providing event-based network visibility and data leak detection and reducing the risks associated with uncontrolled information flow.

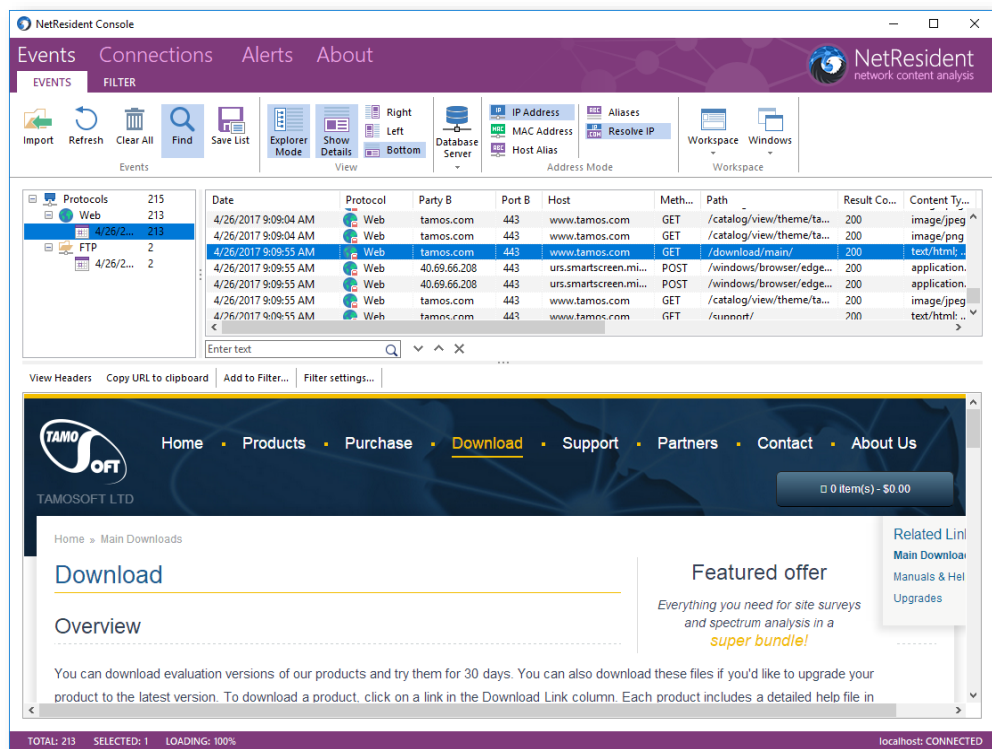
### What They See Is What You Get

NetResident is typically used by those professionals who needs an easy-to-use network content visualization tool to see what, when, and where the data is flowing in the LAN segment or over the Internet link. So what specific network

events can NetResident display for the user when monitoring a LAN segment or individual PC? Quite a lot: viewed web pages and downloaded files (HTTP and FTP), sent and received e-mails (POP3, SMTP, IMAP), posted social network messages (Twitter, Facebook, LinkedIn), MSN, Jabber, IRC, and Yahoo chats, Telnet sessions, and even VoIP conversations.

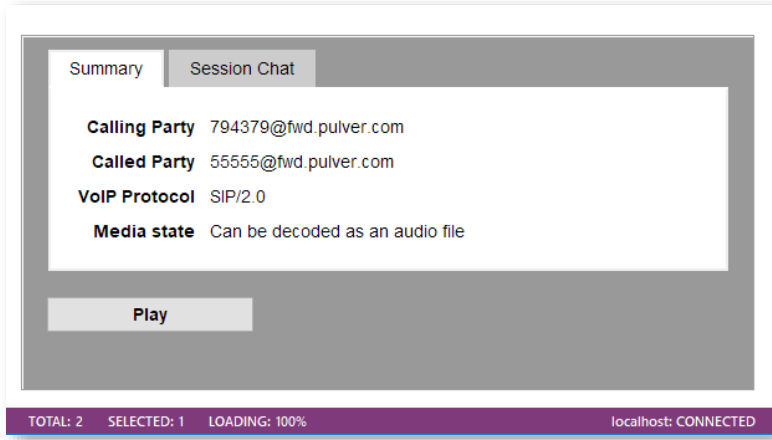
A high-performance engine stores these events in a database and provides easy access to them. You can arrange and filter the data the way you want (by date, conversation party, event

type, etc.) using a simple, familiar interface. The data presentation engine makes sure that you really see the network content as it was transferred across the network.



## VoIP Support

NetResident goes beyond traditional data visualization. Not only do you see the network content, you can actually hear it thanks to the VoIP support. Yes, most of the voice conversation over SIP or H.323 IP telephones or VoIP applications can be recorded and played back. NetResident supports many popular codecs used in IP telephony, and the number of supported codecs is growing.



## Remote Access

The program's client-server architecture makes it easy to access the collected data from any location. While the server should be installed at the data collection point, such as a computer connected to the mirroring port of your LAN's switch or LAN's gateway, accessing the data

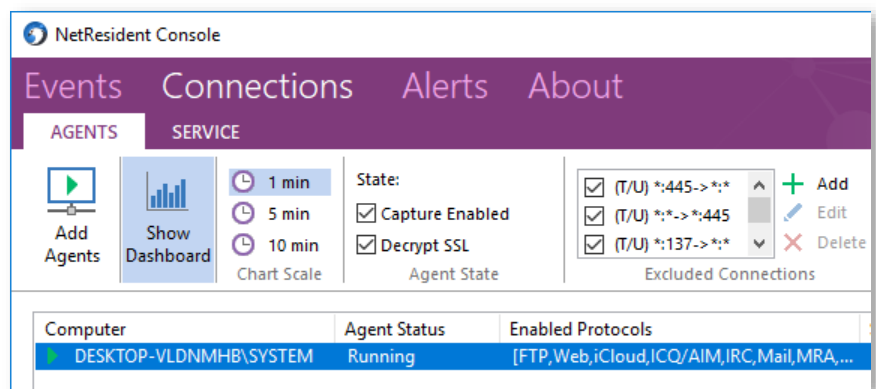
through the NetResident console can be performed both locally and remotely. The console can be deployed on any PC, and you can connect to the database from any location. For security considerations, these connections are always encrypted and password-protected.

## Distributed Agent-Based Data Collection

Introduced in NetResident 3.0, agent-based data capturing allows you to deploy compact monitoring agents on the LAN's PCs. This new architecture facilitates data gathering and, most importantly, makes it possible to capture and decrypt SSL-based traffic.

## Data Import Capabilities

With NetResident, you are not limited by the only source of captured data. If you capture Ethernet or Wi-Fi packets using your favorite network analyzer, you can still use the NetResident's analysis and visualization engine by importing the log files. NetResident supports capture file formats generated by many popular applications in a variety of formats, including TamoSoft's network monitoring solutions, CommView (wired networks) and CommView for WiFi (wireless networks), as well as the widely spread PCAP and PCAPNG formats being used by the tools like TCPdump or Wireshark.



## Product Maintenance

All TamoSoft products come with one year of free updates, upgrades, and technical support.

## System Requirements

NetResident system requirements depend on the network utilization. For optimal performance, we recommend a minimum system setup of an Intel Core 2 processor with 2 GB of RAM. NetResident runs on Microsoft Windows 7, Windows 8, Windows 8.1, Windows 10, Windows Server 2008 R2, Windows Server 2012, Windows Server 2012 R2. Both 32- and 64-bit versions are supported.

## Ordering Information

At TamoSoft, we want you to be happy with your purchase. That is why we encourage you to try our products and technical support free of charge for 30 days before you make a decision regarding your purchase. By making the most of these free evaluations, you can fully test the software and make sure that it does everything you need. When you are ready to buy, we welcome you to [www.tamos.com](http://www.tamos.com) to order directly from us, or through our partners and resellers in many countries.

Copyright © 1998-2017 TamoSoft. All Rights Reserved. No part of this document can be reproduced, duplicated or modified in any form, including electronic means, without the express written permission of TamoSoft. NetResident is a registered trademark of TamoSoft. All other product names and trademarks are the property of their respective holders.

### TamoSoft

PO Box 1385  
Christchurch 8140  
New Zealand

Phone:  
+1 866 666 1370 (toll-free)  
+1 347 673-0880 (international)

sales@tamos.com  
WWW.TAMOS.COM